

# Lucky<sup>®</sup>

LIFESTYLE



## MASTER BARBER KIT

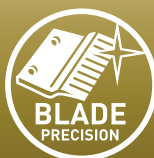
complies with  
INTERNATIONAL  
IEC60335  
SAFETY SPECIFICATIONS

*L*  
10W

1YEAR  
WARRANTY

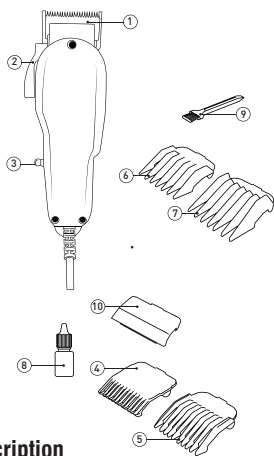
Model:  
HCL07AC

PLEASE READ ALL INSTRUCTIONS BEFORE USE



## Dear customer,

Thank you for choosing to purchase a Lucky brand product. Thanks to its technology, design and operation and the fact that it exceeds the strictest quality standards, a fully satisfactory use and long product life can be assured.



## 1. Parts description

1. Blades
2. Blades shift lever
3. On/off switch
4. 3mm comb guide (1/8 inch) #1
5. 6mm comb guide (1/4 inch) #2
6. 9mm comb guide (3/8 inch) #3
7. 12 mm comb guide (1/2 inch) #4
8. Bottle of lubricating oil
9. Cleaning brush
10. Blades protective cover



## 2. Safety advice and warnings!

Read these instructions carefully before switching on the appliance and keep them for future reference. Failure to follow and observe these instructions could lead to an accident. Clean all the parts of the product that will be in contact with head, as indicated in the cleaning section, before use.

### 2.1. Use or working environment:

- 2.1.1. Keep the working area clean and well lit. Cluttered and dark areas invite accidents.
- 2.1.2. Use the appliance in a well ventilated area.
- 2.1.3. Do not place the appliance on hot surfaces, such as cooking plates, gas burners, ovens or similar items.

2.1.4. Keep children and bystanders away when using this appliance.

2.1.5. Place the appliance on a horizontal, flat, stable surface away from other heat sources.

2.1.6. Do not use the appliance in association with a programmer, timer or other device that automatically switches it on.

2.1.7. Do not use the appliance if the cable or plug is damaged.

2.1.8. Ensure that the voltage indicated on the rating label matches the mains power supply voltage before plugging in the appliance.

2.1.9. Connect the appliance to the mains power supply with an earth socket withstanding a minimum of 10 amperes.

2.1.10. The appliance's plug must fit into the mains power supply socket properly. Do not alter the plug.

2.1.11. If using a multi plug check ratings carefully as the current used by several appliances could easily exceed the rating of the multi plug.

2.1.12. If any of the appliance casings breaks, immediately disconnect the appliance from the mains power supply to prevent the possibility of an electric shock.

2.1.13. Do not use the appliance if it has fallen on the floor or if there are visible signs of damage.

2.1.14. Do not force the power cord. Never use the power cord to lift up, carry or unplug the appliance.

2.1.15. Do not wrap the power cord around the appliance.

2.1.16. Do not clip or crease the power cord.

2.1.17. Do not allow the power cord to hang or to come into contact with the surfaces.

2.1.18. Check the state of the power cord. Damaged or tangled cables increase the risk of electric shock.

2.1.19. Power cord should be regularly examined for signs of damage, and if the cord is damaged, the appliance must not be used.

2.1.20. Do not touch the plug with wet hands.

### 2.2. Personal safety:

2.2.1. CAUTION: Do not leave the appliance unattended during use as there is a risk of an accident.

2.2.2. Do not touch the heated parts of the appliance, as it may cause serious burns.

2.2.3. This appliance is only for domestic use, not for industrial or professional use. It is not intended to be used by guests in hospitality environments such as bed and breakfast, hotels, motels, and other types of residential environments, even in farm houses, areas of the kitchen staff in shops, offices and other work environments.

2.2.4. This appliance is not intended for use by persons (including children) with reduced physical, sensory or mental capabilities, or lack of experience and knowledge, unless they have been given supervision or instruction concerning use of the appliance by a person responsible for their safety.

2.2.5. This appliance is not a toy. Children should be supervised to ensure that they do not play with the appliance.

### 2.3. Use and care:

2.3.1. Fully unroll the appliance's power cable before each use.

2.3.2. Do not use the appliance if the parts or accessories are not properly fitted.

2.3.3. Unplug the appliance from the mains power supply when not in use and before undertaking any cleaning task.

2.3.4. This appliance should be stored out of reach of children.

2.3.5. Do not store the appliance if it is still on/hot.

2.3.6. Never leave the appliance unattended when in use and keep out of the reach of children.

2.3.7. If, for some reason, the appliance were to catch fire, disconnect the appliance from the mains power supply and **DO NOT USE WATER TO PUT THE FIRE OUT.**

### 2.4. Service:

2.4.1. Make sure that the appliance is serviced only by suitably qualified technician, and that only original spare parts or accessories are used to replace existing parts/accessories.

2.4.2. If the power cord is damaged, the manufacturer or its service agent or a similarly qualified person must replace it in order to avoid a hazard.

2.4.3. Any misuse or failure to follow the instructions for use renders the guarantee and the manufacturer's liability null and void.



## 3. Instructions for use

### 3.1. Before use:

3.1.1. Remove the appliance's protective film(if applicable).

3.1.2. Before using the product for the first time, clean the parts that will come into contact with your head in the manner described in the cleaning section.

### 3.2.1 Use and care:

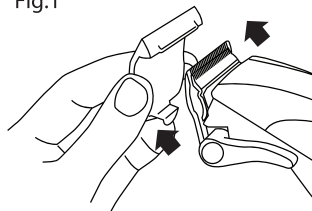
Using the appliance:

3.2.1.1. Unroll the cable completely before plugging it in.

3.2.1.2. Connect the appliance to the mains.

3.2.1.3. Remove the protective lid (Fig 1)

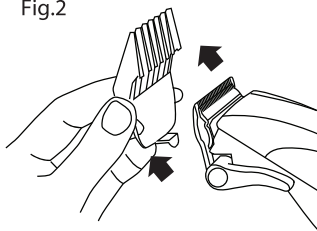
Fig.1



3.2.1.4. Make sure that the blades are correctly aligned.

3.2.1.5. To attach a comb guide, pick it up by its two tips and press it against the blades of the appliance until it is firmly fixed. To remove it, just pull it out (Fig 2)

Fig.2



3.2.1.6. Turn the appliance on using the on/off switch.

3.2.1.7. You can restart the appliance using the switch, but only once the control device has cooled. If it is has not restarted, do not force it and leave it to cool.

Using the power screw:

3.2.1.8. The blade track is set to the optimum setting in production; however, the blade track can be changed as a result of the voltage fluctuations.

3.2.1.9. You can set this blade track if necessary, use

the key (included with your pack) or screwdriver. Do the following in order to adjust it:

3.2.1.10. Switch the clipper on.

3.2.1.11. Turn the adjusting screw clockwise until hear a loud noise.

3.2.1.12. Then turn the adjusting screw anti-clockwise until the loud noise stops. This is the optimum point for the clipper to operate, leave the screw in this position.

Cutting with attachment combs:

3.2.1.13. Depending on the desired hair cut, the clipper can be operated with or without an attachment comb.

3.2.1.14. There are four attachment combs (3, 6, 9 and 12mm) included with this product.

3.2.1.15. To attach a comb, hold comb with the teeth showing upward and slide it onto and along the clipper blade until the front of the comb firmly clicks into the clipper blade and push the back of the comb down until it is clipped into position.

3.2.1.16. To remove the comb, simply pull the comb upward and away from the clipper blade.

How to use the blade lever:

3.2.1.17. The lever is conveniently located above the on/off switch so it can easily be adjusted while the clipper is in your hand.

3.2.1.18. The lever adds versatility to the clipper by allowing a gradual change to the length of a cut without an attachment comb.

3.2.1.19. When the lever is in the uppermost position, the blades will give the closest cut leaving the hair very short. Pushing the lever gradually downward increases the cutting length.

3.2.1.20. In its lowest position, the lever will leave the hair approximately the same length as a #1 comb.

3.2.1.21. The lever will also extend the blade's life as a longer cut requires less work from the blades.

3.2.1.22. While the clipper is running, move the Lever from "close cut" to "longer cut" a number of times. This will help keep cut hair away from the blades. If the clipper stops cutting, and the method above does not help, then the blades are blunt and need to be replaced.

Changing the blades:

3.2.1.23. Switch off the clipper and disconnect from the mains.

3.2.1.24. Undo both screws on the blades; remove the bottom blade and top blade.

3.2.1.25. When assembling, the bottom blade and top blade should be aligned as follows:

3.2.1.26. Raise the adjustable taper control lever to the shortest cutting length.

3.2.1.27. The distance between the front edge of the bottom blade and the front edge of the top blade should be between 0.8mm and 1.5mm.

3.2.1.28. The sides of the two blades should be parallel to each other.

3.2.1.29. The first tooth of the top blade (from the left) must cover the first tooth of the bottom blade.

3.2.1.30. The tooth on the far right of the top blade must touch the outermost large tooth of the bottom blade.

3.2.1.31. Once aligned tighten both screws.

### 3.2.2. How to cut the hair:

3.2.2.1. Situate the person whose hair you are going to cut so that the top of their head is at your eye level.

3.2.2.2. For optimum results, it is recommended that you use the appliance on dry hair, as it is much easier to control the hair and the result.

3.2.2.3. Hold the appliance in a calm and relaxed manner in order to ensure maximum control of the cut and a uniform result. Proceed to used short cuts gradually going around the head.

3.2.2.4. Leave the hair a little longer than the desired length as it can always be altered later.

3.2.2.5. While working, adapt the comb / comb guide to achieve the desired result.

3.2.2.6. At regular intervals, stop cutting in order to comb the hair and check the results so far.

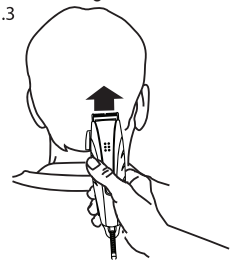
### 3.2.3 Nape:

3.2.3.1. Attach comb guide size: 3mm - 6mm.

3.2.3.2. Hold the appliance with the razor facing downwards and begin to cut the hair from the base of the neck.

3.2.3.3. Make some upward movements, raising the appliance gradually and away from the head, cutting the hair gradually until the height of the ears (Fig. 3)

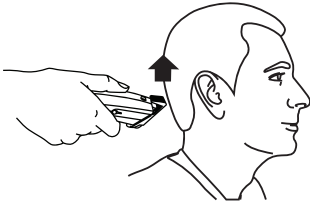
Fig.3



### 3.2.4 The back of the head:

3.2.4.1. Attach comb guide size 9-12mm and continue with the back of the head (Fig 4)

Fig.4



**3.2.5 The side of the head:**

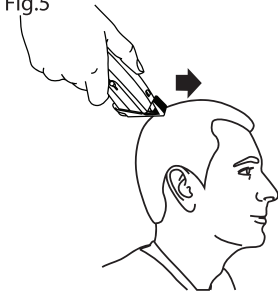
3.2.5.1. Attach comb guide size: 3mm - 6mm to trim the sideburns.

3.2.5.2. Attach the longest comb guide size 9mm/12mm again and continue until you reach the top of the head.

**3.2.6 The top of the head:**

3.2.6.1. Attach comb guide size 9mm or 12mm, pass the appliance from the back to the front, against the growth of the hair (Fig 5). In some cases it's necessary to go over what you have done a second time from front to back.

Fig.5



3.2.6.2. Attach comb guide size 3mm or 6mm when you want to achieve a more precise cut.

- Use comb guides size 12-15mm to leave hair at a longer length. Hold the hair up with the comb or the comb and your fingers and cut.

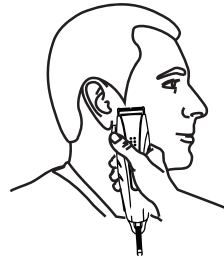
3.2.6.3. Always work from the back to the front reducing the length between your fingers or the comb and the head gradually.

**3.2.7 The final touch:**

3.2.7.1. Finally use the appliance without attaching any comb guides to the blades to cut the hair around the base of the neck, the sides of the neck and the ears.

3.2.7.2. To make the sideburns straight, turn the appliance over to use the upper blades (Fig 6). Move the appliance adapting it to the physiognomy of the head.

Fig.6



**3.3 Once you have finished using the appliance:**

3.3.1. Allow appliance to cool down.

3.3.2. Unplug the appliance from the mains power supply.

3.3.3. Clean the appliance as described in the cleaning section.

3.3.4. Put the protective cover back on.



**4. Cleaning**

4.1. Disconnect the appliance from the mains power supply and allow it to cool completely before undertaking any cleaning task.

4.2. Clean the removable crumb tray with a damp cloth and dry.

4.3. Clean the outer parts of the appliance with a damp cloth with a few drops of washing-up liquid and then dry. CAUTION! Do not immerse electrical parts of the appliance in any liquid.

4.4. Do not use solvents, or products with an acid or base pH such as bleach, or abrasive products, for cleaning the appliance.

4.5. Never submerge the appliance in water or any other liquid or place it under running water.

4.6. During the cleaning process, take special care with the blades, as they are very sharp.


4.7. Clean the blades and the comb guides with the cleaning brush. Remove the hairs from the blades and from inside the appliance with the brush. It is important to clean off remaining hairs after each use.



**5. Anomalies and repair**

5.1. Take the appliance to an authorised support centre if product is damaged or other problems arise.

5.2. If the connection to the mains has been damaged, it must be replaced and you should proceed as you would in the case of damage.



- This symbol means that in case you wish to dispose of the product once its working life has ended, take it to an authorised waste agent for the selective collection of Waste from Electric and Electronic Equipment (WEEE).



- This symbol signifies that the appliance must not be used near water

This appliance complies with Directive 2006/95/EC on Low Voltage and Directive 2004/108/EC on Electromagnetic Compatibility.



Lucky guarantees that this product has been thoroughly inspected and tested before being dispatched and is free from mechanical and electrical defects and complies with the applicable safety standards. However, should defects due to faulty material or workmanship develop, under normal domestic use, within 6 months from the date of purchase please return the product to the store from where it was purchased for a full refund or replacement.

The following conditions apply:

- 1) Please ensure you retain your receipt as this must be presented when making a claim under the terms of the warranty. It is impossible to determine the warranty period without proof of purchase, so please keep this in a safe place.
- 2) If a refund or exchange is required the product must be complete with all accessories, parts and packaging. Missing parts will render the warranty void.
- 3) Upon receipt of your appliance check it for any transport damage to ensure it is safe for use. Return it to the store as soon as possible for exchange if damaged. The warranty is void if products are damaged after use, so please do not use the damaged product.
- 4) Your product is designed for normal domestic household use. Failure to read and comply with the instructions for use, cleaning and maintenance will render your warranty void, so please read these instructions carefully to ensure your safety, and get the most effective use from the product. (e.g. lime scale; water deposits; and/or insect infestation)
- 5) Any abuse, negligent, improper or accidental use or care will render the warranty void and Creative Housewares (Pty) Ltd will not be liable for any loss or damage.
- 6) Any attempted repair, or replacement of unauthorised parts will render the warranty void, so please contact an authorised service centre or agent for any service or repair requirements.

#### Extended 12 Month Limited Warranty

Lucky offer an extended 12 month limited warranty from the date of purchase to offer the consumer peace of mind on their purchase. Should defects due to faulty material or workmanship develop, under normal domestic use, within 12 months from the date of purchase, please return the product to the store from where it was purchased for replacement.

Before returning your product, check for the following:

- 1) Your household mains supply socket is working and switched on.
- 2) The mains supply circuit is not overloaded (White trip switch on your DB board is off).
- 3) You have read the trouble shooting guide in your Instructions for Use.
- 4) All accessories and parts are present.

If service or repair becomes necessary outside the warranty period, this service is still available however all transport/postage, spares and labour costs will be paid by the consumer. All chargeable repairs will require the consumers' approval in writing once the quote is accepted. Once the go-ahead has been received Lucky will undertake to conduct the repair within a reasonable time and maintain the condition of the product as received.

All repairs carry a 3 month warranty. Lucky will attempt to conduct repairs within reasonable industry standards but cannot be held responsible or liable for any circumstances not under their direct control.

**National Service Centre: 086 111 5006**

**e-mail: [help@creativehousewares.co.za](mailto:help@creativehousewares.co.za)**

**creative housewares**

web: [www.creativehousewares.co.za](http://www.creativehousewares.co.za)

#### **Cape Town**

20 Tekstiel Street, Parow, Cape  
Town, 7493, South Africa • P.O. Box  
6156 Parow East, 7501, South Africa  
Tel: +27 21 931 8117  
Fax: +27 21 931 4058

#### **Durban**


35 Adrain Road, Windermere,  
Durban, South Africa, 4001  
Tel: +27 31 303 3465  
Fax: +27 31 303 8259


#### **Johannesburg**



Unit 25 & 26 San Croy  
Officepark, Die Agora Road,  
Croydon, 1619  
Tel: +27 11 392 5652  
Fax: +27 11 392 1694

**1 year warranty**


## creative housewares

 20 Tekstiel St, Parow, Cape Town, 7493, RSA

 P.O. Box 6156 Parow East, 7501, RSA

 +27 21 931 8117  +27 21 931 4058

Service Centre Helpline: 086 111 5006

 [www.creativehousewares.co.za](http://www.creativehousewares.co.za)